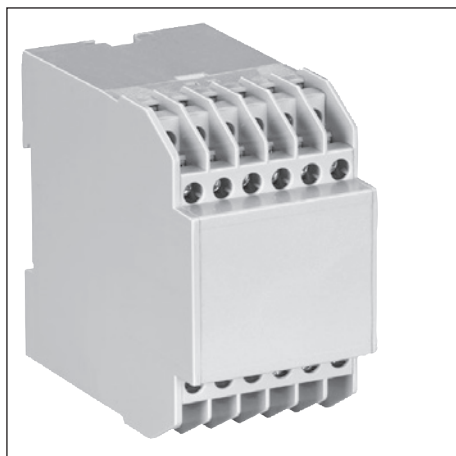
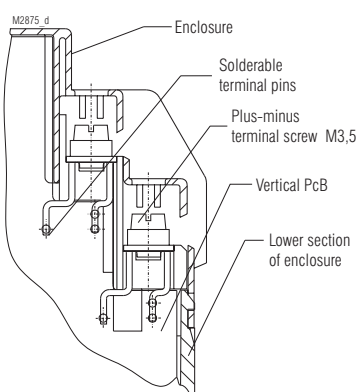


Insulated Enclosure KO 4905

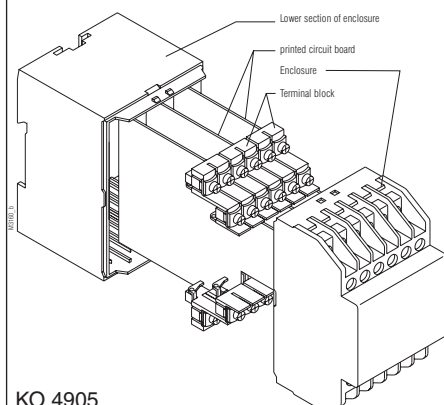
for surface mounting and mounting in cabinets,
with flat terminals



- Width 52,5 mm
- Max. 24 plus-minus-terminal screws with self-raising terminal washers
- Reliable connection of max. 2 wires even with different diameter
- Terminal blocks can be machine-soldered additional wire soldering is possible
- Housing supplied as single parts, terminals prefitted in terminal blocks



Flat terminals for solder connection

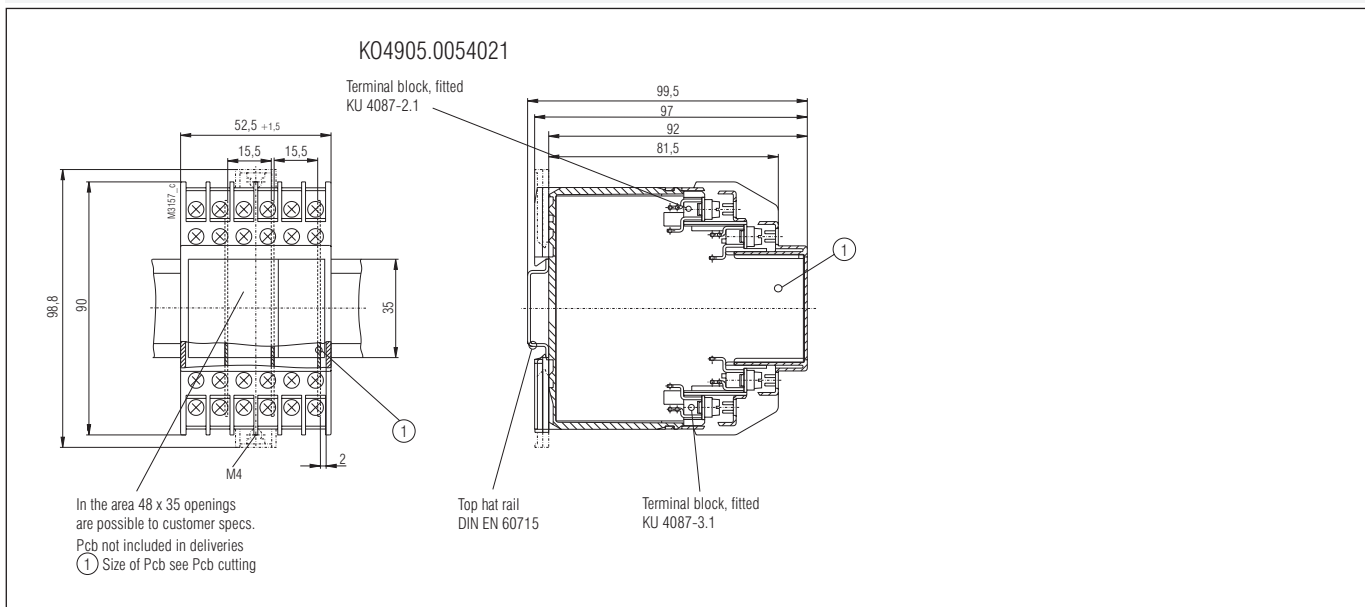


KO 4905

Technical Data

Order reference:	KO 4905.0054021
Outer dimensions:	52.5 x 90 x 97 mm
Enclosure material:	PC-GF, light grey RAL 7035
Temperature stability:	
complying with UL 746 B:	125 °C
complying with Vicat	
ISO 306 Meth. B:	148 °C
compl. with ISO 75-2 Meth. A:	138 °C
Meth. B:	144 °C
Max. permitted power dissipation:	11 W for stand-alone enclosure at normal climate 23/50-1
	ISO 554
specific thermal resistance:	R _{th} = 5 K / W for stand-alone enclosure
Flame retardancy	
complying with UL 94:	V-0
complying with IEC 60 707:	BH 2-30
Number of terminals:	24, < 24 on request
Terminal material:	Steel strip, tin-plated
Max. cross section for connection:	2 x 2.5 mm ² solid 2 x 1.5 mm ² stranded ferruled min. Ø 0.1 mm solid
	DIN 46 228-1/-2/-3/-4
Insulation of wires length:	9 - 10 mm
Max. contact resistance to printed circuit board:	20 mΩ
Max. current carrying capacity:	16 A, 40 A on request
Wire fastening:	Captive plus-minus-terminal screws M3.5 with self raising terminal washers Function complying with
	IEC 60 999-1
Torque:	max. 0.8 Nm
Inner connection:	Machine-solderable terminal pins for printed circuit board and soldering pin for strands
Housing fastener:	1) Snap-on fastener on top hat rail 2) Screw fastening M4, grid 90 mm with second clip as accessory
	EN 50 022
Creepage current resistance:	CTI 175 ≧ insulated material III a
	IEC 60 664-1
Air gap and creepage distances	
Housing for vertical printed circuit board:	Air gap ≥ 4 mm Creepage distance ≥ 6.3 mm
	IEC 60 664-1
Type of protection	
Enclosure:	IP 40
Terminals:	IP 20
	Contact protection complies with VBG 4
Print area:	52.5 x 44 mm
Printed circuit board:	See Printed circuit board design
Printed circuit board holder:	Guide ribs
Component installation height for a vertical printed circuit board	
on component side:	≤ 46 mm
on soldering side:	≤ 2.0 mm
Net weight:	175 g
Accessories:	
ET 4086-0-2:	Second clip for screw fastening
KU 4087-0-2:	Blanking plug for enclosure base
KU 4089-3-4:	Blanking plug for terminal block
KU 4087-1-1:	Dummy terminal block for vertical PCB

Dimensions



Printed circuit board design

